

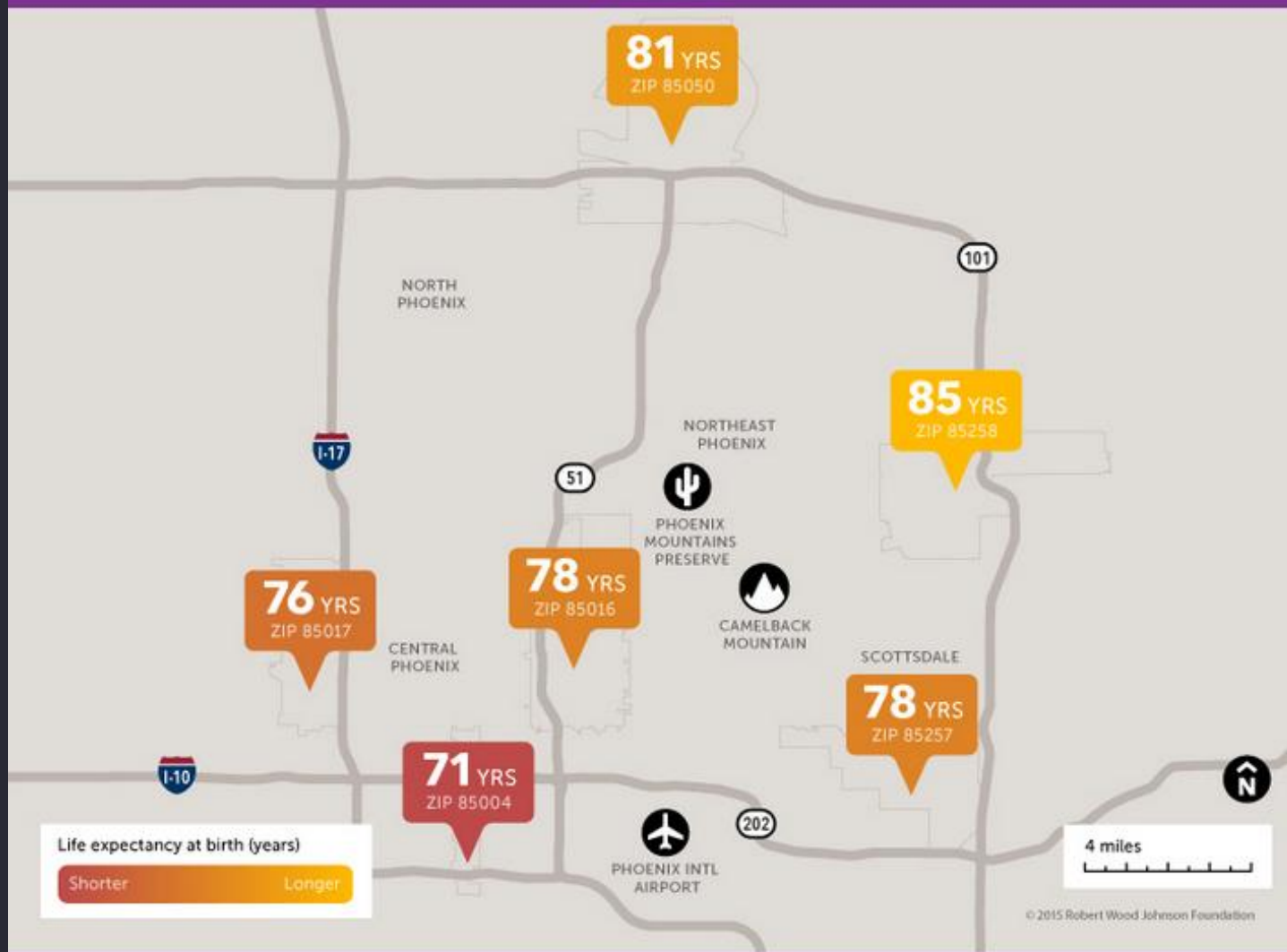
THE ARIZONA HEALTHY COMMUNITIES OPPORTUNITIES INDEX

Determining at-need zip codes through analysis of public health, transportation, housing, and socioeconomic indicators.



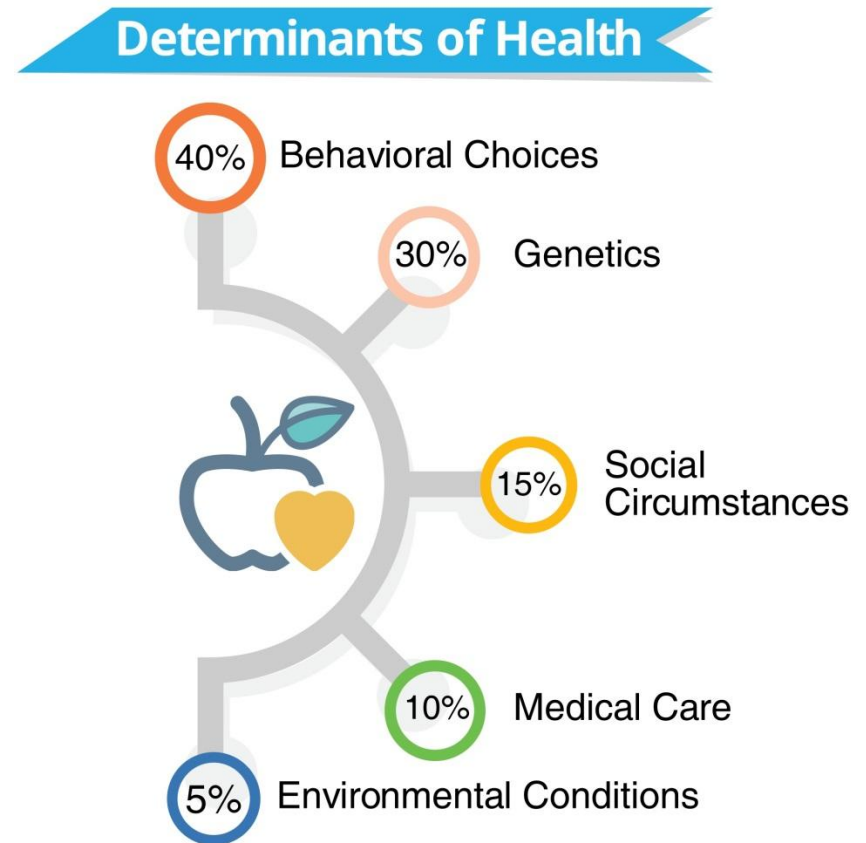
ARIZONA PARTNERSHIP FOR
HEALTHY COMMUNITIES

Short Distances to Large Gaps in Health



Introduction and Purpose

- Zip code more important to health than genetic code
- Determinants of health
- Assist the Arizona Partnership for Healthy Communities
- Multi-sector collaborations
- 403 zip codes in Arizona
- High-level visual representation
- Maps and report



(McGinnis, Williams-Russo, & Knickman, 2002)

Construction of the Index

I. Selecting the Indicators

- I. 4 Dimensions
- II. 15 Indicators

II. Collecting the Data

- I. Limitations
- II. Percentages, rates, pounds, and ratios

III. Normalizing the Data

- I. Min-Max Method
- II. Scored (1-100)

IV. Mapping the Final Scores

- I. ArcGIS Software
- II. Jenks Natural Breaks

Dimensions, Indicators, and (Data Sources)

- **Housing and Neighborhoods**

- Residents Living in a Food Desert (USDA)
- Toxics Released in the Area (EPA)
- Housing Cost Burden (ACS)
- Subsidized Housing Density (NHPD & ACS)

- **Public Health**

- Core Barriers (ADHS)
- Core Health Indicators (ADHS)
- Other Health and Access Indicators (ADHS)

- **Demographics and Socioeconomics**

- Family Poverty Rate (ACS)
- Education Level (ACS)
- Percentage of Minority Residents (ACS)
- Supplemental Nutrition Assistance Program Recipients (ACS)
- Unemployment Rate (ACS)

- **Transportation**

- Transportation Costs (HUD)
- Walkability (Walkscore)
- Annual Household Public Transit Trips (HUD)

Construction of the Index

I. Selecting the Indicators

- I. 4 Dimensions
- II. 15 Indicators

II. Collecting the Data

- I. Limitations
- II. Percentages, rates, pounds, and ratios

III. Normalizing the Data

- I. Min-Max Method
- II. Scored (1-100)

IV. Mapping the Final Scores

- I. ArcGIS Software
- II. Jenks Natural Breaks

Using the Index

We wanted to know more than just life expectancy; we decided to go 15 layers into it.

What the maps are:

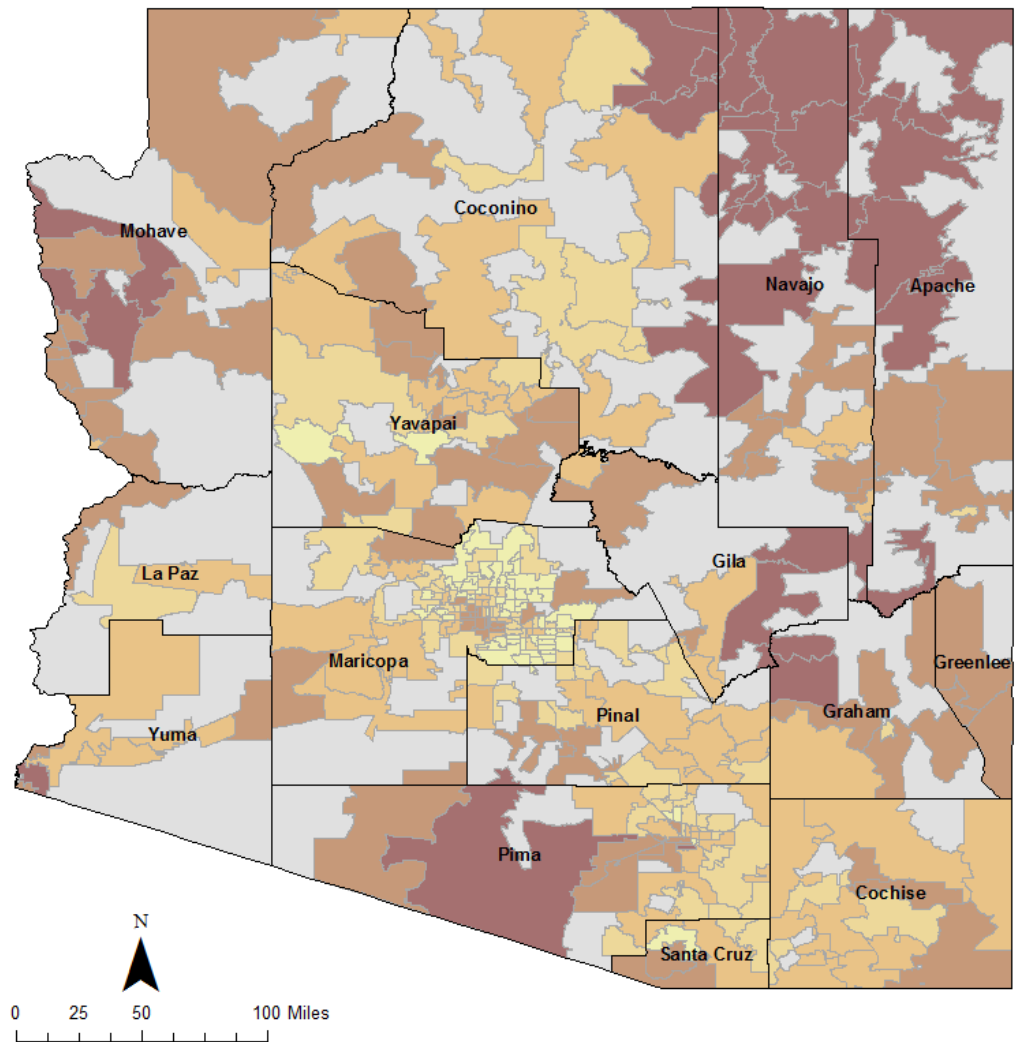
- High-level view of what's happening in Arizona's zip codes

We hope they will:

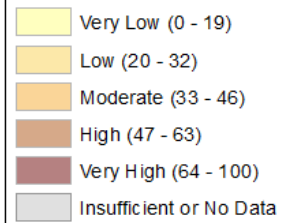
- Help direct efforts, investments
- Capture people's interest
- Encourage people to take a deeper look at what's happening with health

What the maps are NOT:

- A comprehensive picture of *everything* happening with health in each zip code
- An asset map



Zip Code Need (0-100)

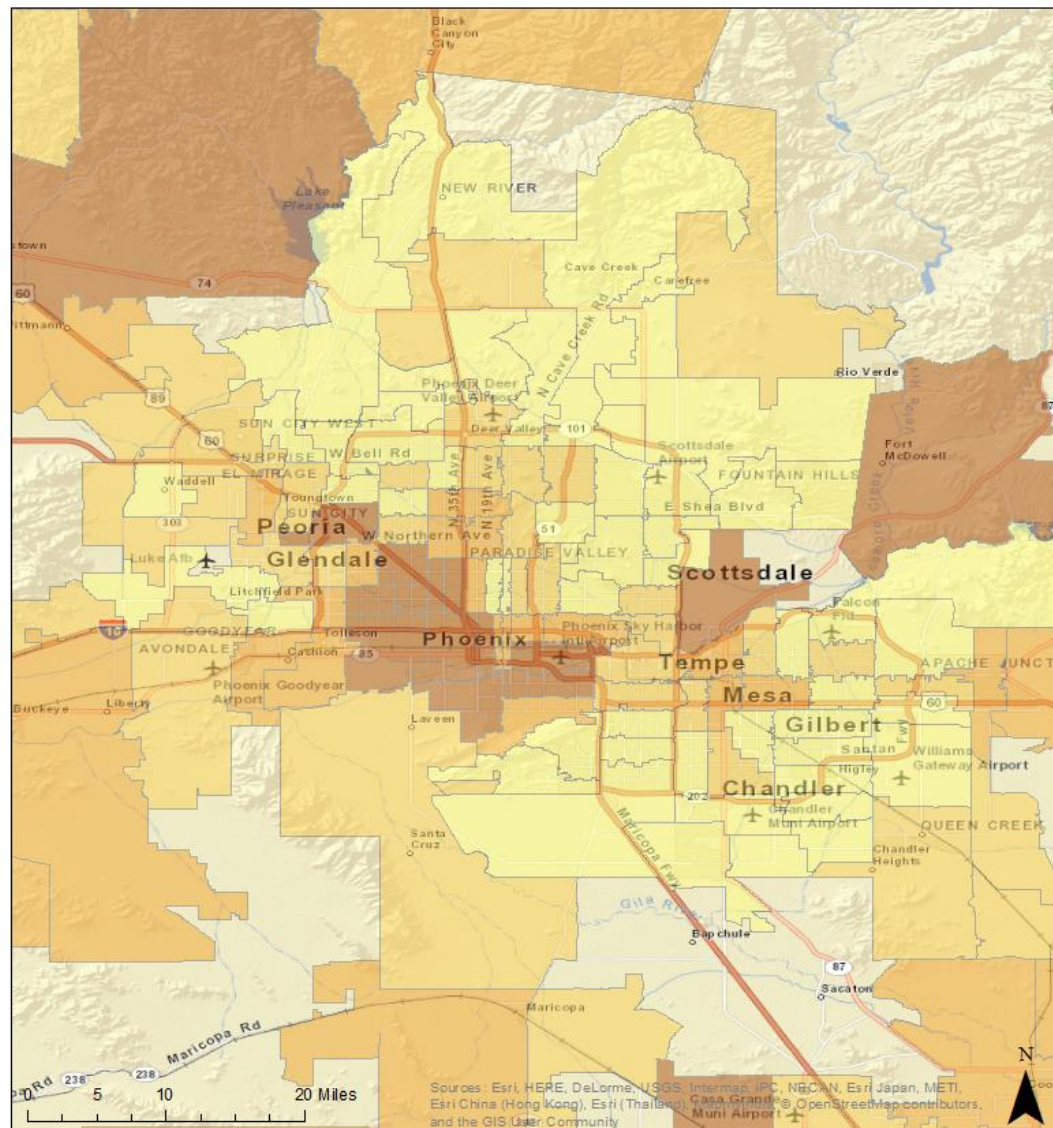


Arizona Healthy Communities Opportunity Index Counties

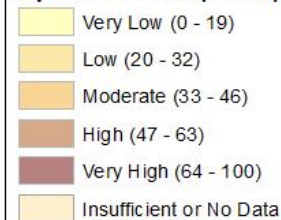


ARIZONA PARTNERSHIP FOR
HEALTHY COMMUNITIES

Footnote: Zip code need score intervals were calculated using Jenks natural breaks classification method.



Zip Code Need (0-100)

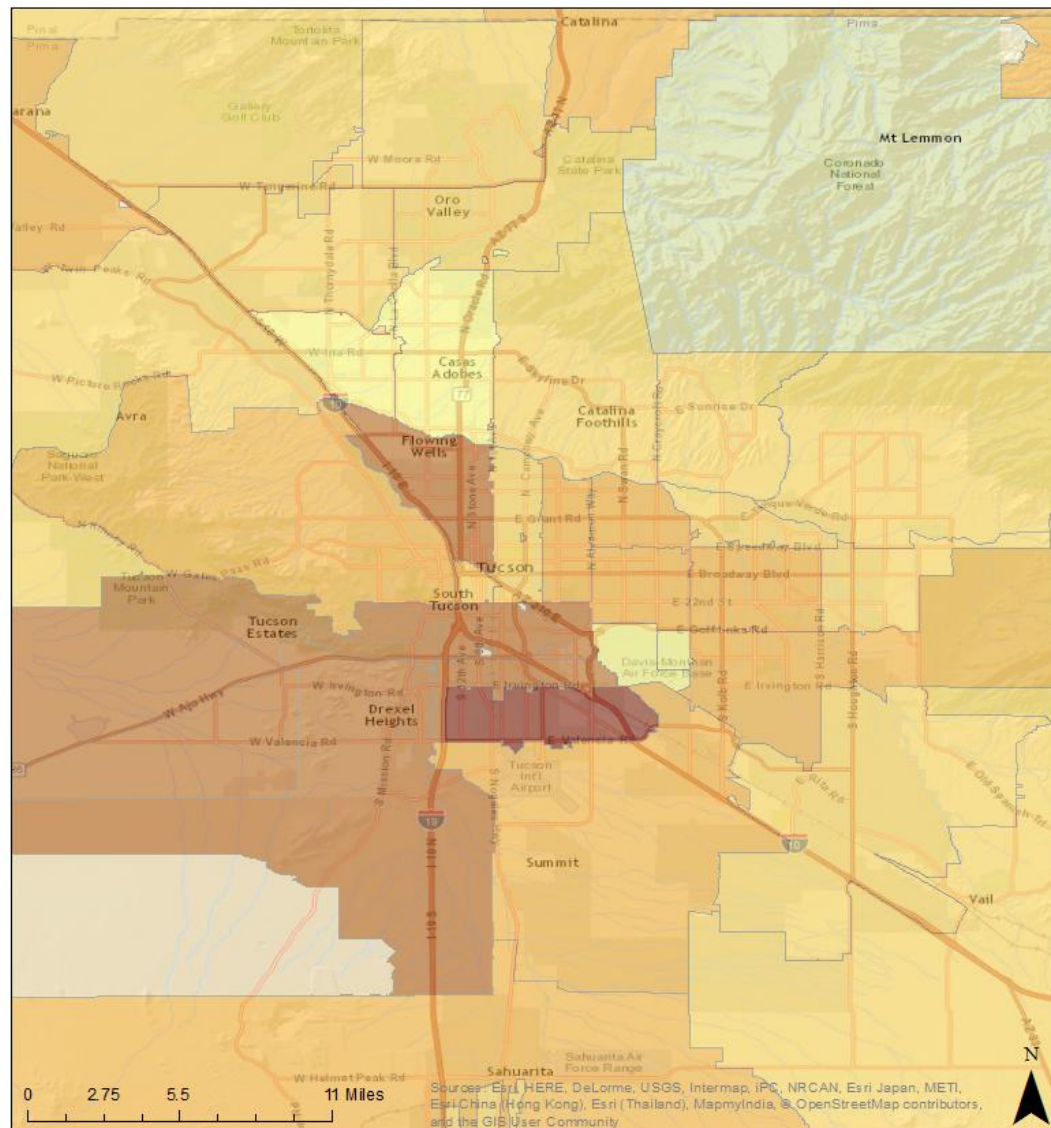


Arizona Healthy Communities Opportunity Index Phoenix Metropolitan Area



ARIZONA PARTNERSHIP FOR
HEALTHY COMMUNITIES

Footnote: Zip code need score intervals were calculated using Jenks natural breaks classification method.



Zip Code Need (0-100)

- Very Low (0 - 19)
- Low (20 - 32)
- Moderate (33 - 46)
- High (47 - 63)
- Very High (64 - 100)
- Insufficient or No Data

Arizona Healthy Communities Opportunity Index Tucson Metropolitan Area



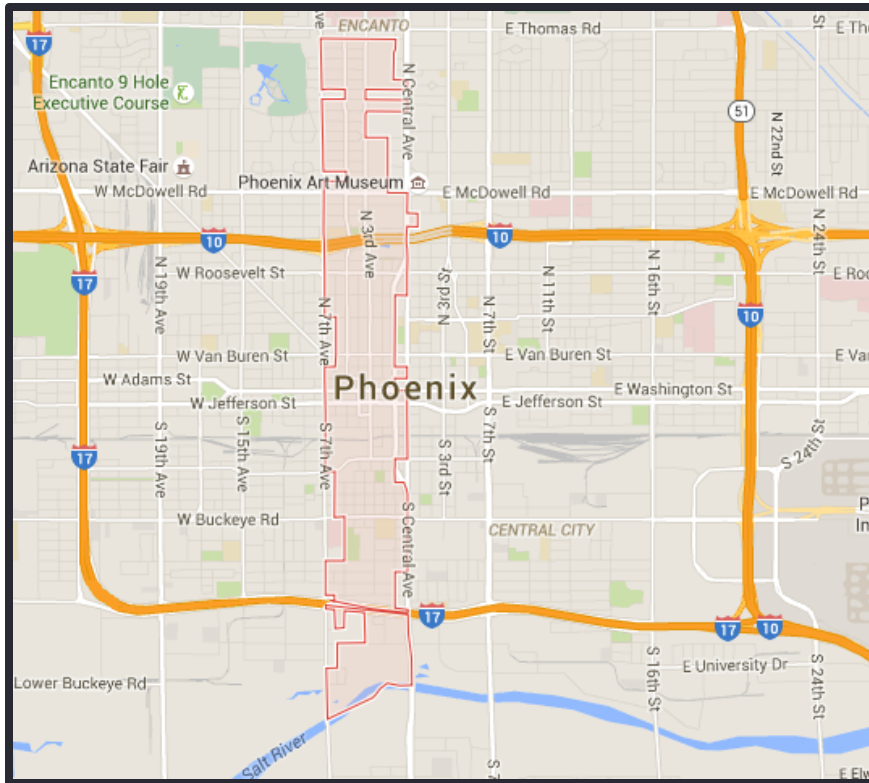
ARIZONA PARTNERSHIP FOR
HEALTHY COMMUNITIES

Footnote: Zip code need score intervals were calculated using Jenks natural breaks classification method.

Comparing 2 zip codes

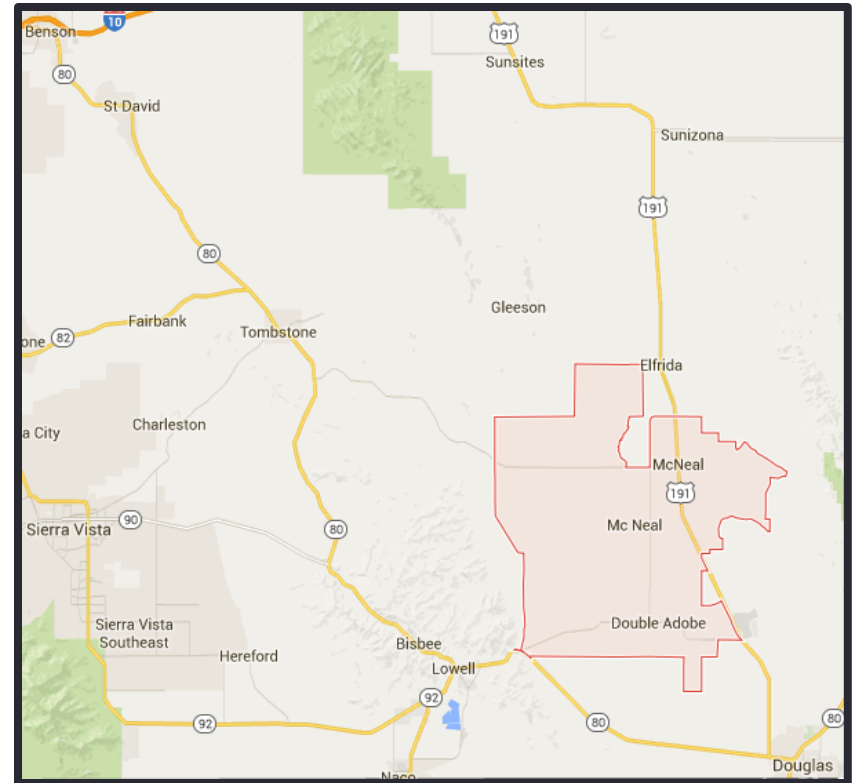
85003

Urban, central Phoenix



85617

Rural, SE Arizona

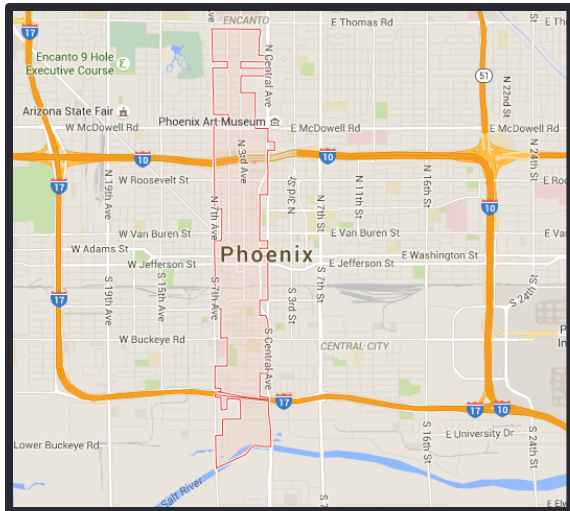


Comparing 2 zip codes

37 = average score for all AZ zip codes

**85003 and 85617 each score 37 on the Index,
but for very different reasons**

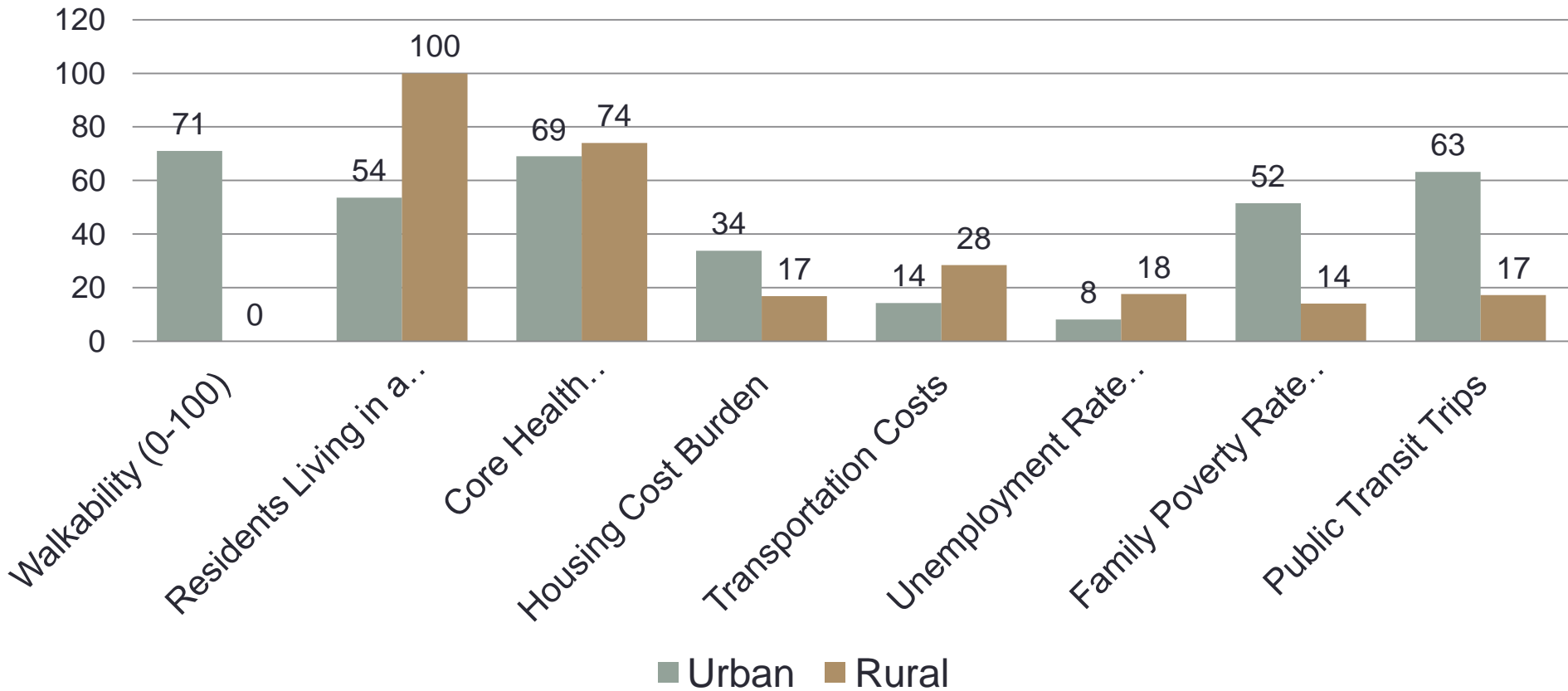
85003



85617



Urban vs Rural Indicators



Upcoming Webinars

Learn more about the Healthy Community Opportunity Index and how to use it on regional webinars:

Wednesday, April 20th – southern Arizona

Wednesday, April 27th – central Arizona

Wednesday, May 4th – northern Arizona

All webinars will be held from 10-11am

Details to be announced via email soon



QUESTIONS?

Contact:

Paul Minnick

www.paulminnick.info

pminnick@asu.edu